

# AD-Tech COAT

## Working Case



R & D , Manufacture and sale of Anti-dirt coating agent

**Trade Service Corporation**

# Anti-dirt for Solar panel cover glass

■ Place : Roof of K company   ■ Date of work : 2007,Sept.29



[Progress · Effect]

2011,July,15 Photo.

After work 4years, seems not seen of Dirt on the cover glass. But just few dust on the glass .There was no rain about one week before taking photo

■ Place : Fukui-Pref.   ■ Date of work : 2007,Sept.29   ■ Remark : Kanaka made PV.



# Solar panel cover glass Against Snow · Volcano fly ash

■ Place : Misawa, Aomori   ■ Date of work : 2014.Feb.26   ■ Remarks : Mega solar site



## [Progress · Effect]

Panel surface temperature become more than Zero °C. Snow melt on the surface of glass and slip down. This will help stop of generating and damage from snow weight.

■ Place : Tarumizu-city hall roof, Kagoshima-Pref.   ■ Date of work : 2013.Feb.25



## [Progress · Effect]

Left; Photo before rain.  
Anti-static electricity function due to hydrophilic membrane, Keep off from Volcano fly ash and yellow sand etc .and even dirt be flow out by self-cleaning function.

# Railway Car

## ■ JR East Japan Car



## ■ Kinntetsu Express Car Window ceiling of car



## ■ Sagano Tram train Glass, Car body

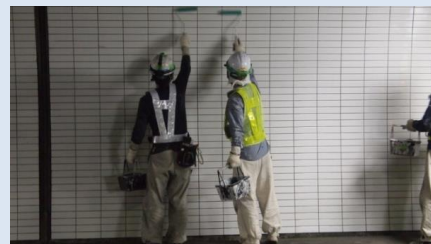
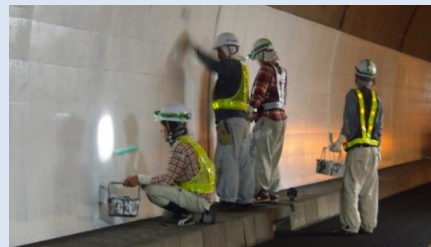
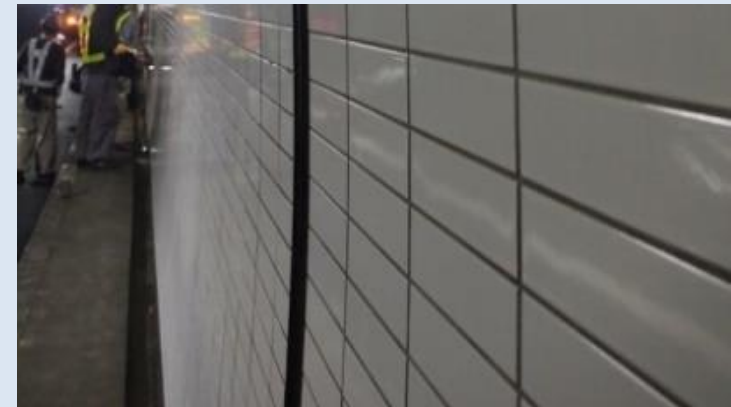


## ■ J O T Freezing container



# Tunnel wall

■ Place : Kukuri No.2 Tunnel   ■ Date of work : 2013.Jun.11   ■ Remarks : Tokai high way



## [Progress · Effect]

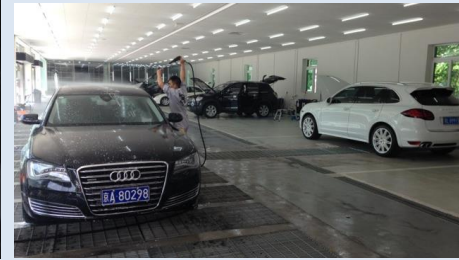
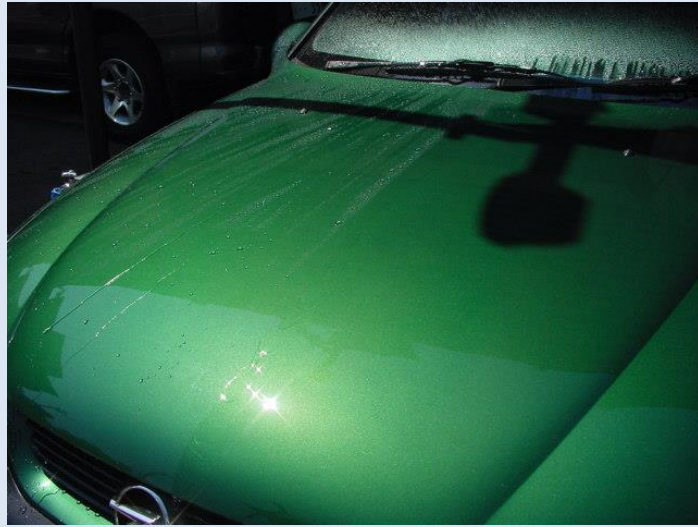
Compare with coated and non coated wall has clearly difference just one month due to anti-static electricity function .

Tunnel wall dirt by exhaust gas from car.

# Auto mobile

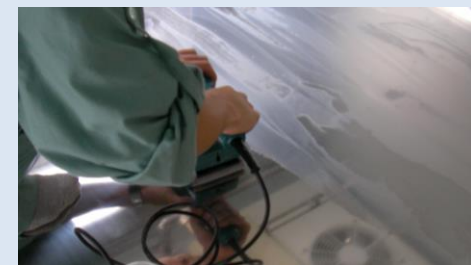
■ Esprit Japan (Kobe.Hyogo-Pref.)

※ Actual work more than 10,000 cars



■ Jr west bus glass

■ Cold storage car

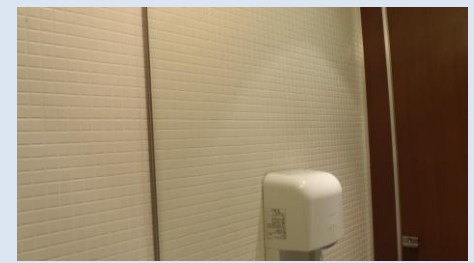


# Store

## ■ Ohsho(Chinese restaurant) glass, table et



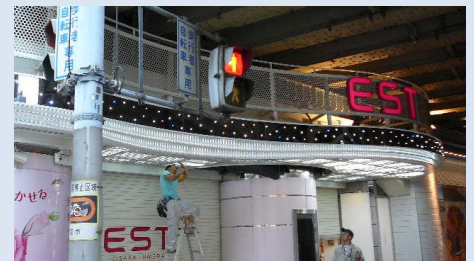
## ■ Mr. doughnut glass, table etc.



## ■ Convenience store glass etc



## ■ Stainless decoration LED



# 船舶

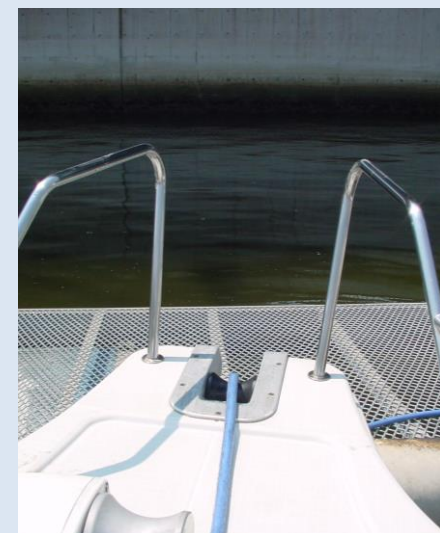
■ くりはま 甲板・スクリュー・ガラス・船名プレート・操舵室・トイレ・浴室・調理台 …他



■ Cruiser hull



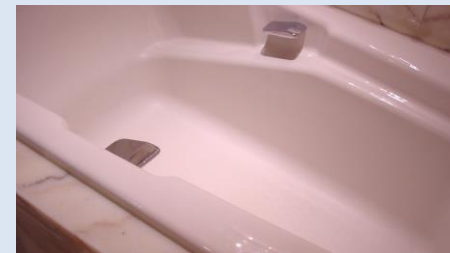
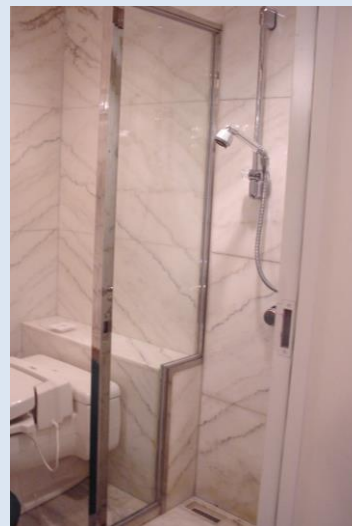
■ Pleasure boat glass, handrail etc



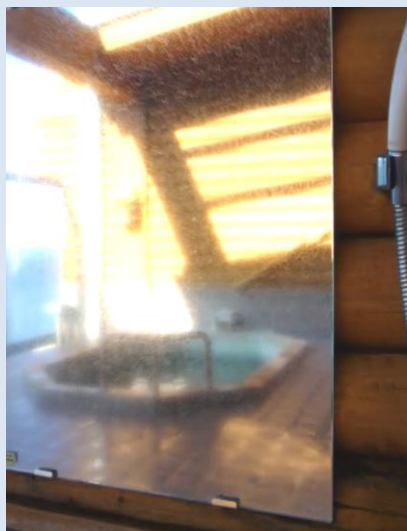


# Hotel · Accommodation

■ Hotel New Otani Tokyo · Osaka smoking room · bath mirror · guest room etc



■ New Sagamiya (Atami) hot spring (mirror, glass)



■ Hotel Remarni guest room (glass, bath room mirror)



# Outer wall ,Sign board

- Ohtsu post office sign board, under eaves, glass , table, air conditioner etc



- Yakult outer wall (under part), glass



- House wall (1 month past after coat)



# Glass

## ■ Kyocera head office



## ■ Hotel New Otani Tokyo



## ■ Mr. Doughnut



## ■ Wataya, Ureshino hot spring



## ■ Yakult Nagoya factory



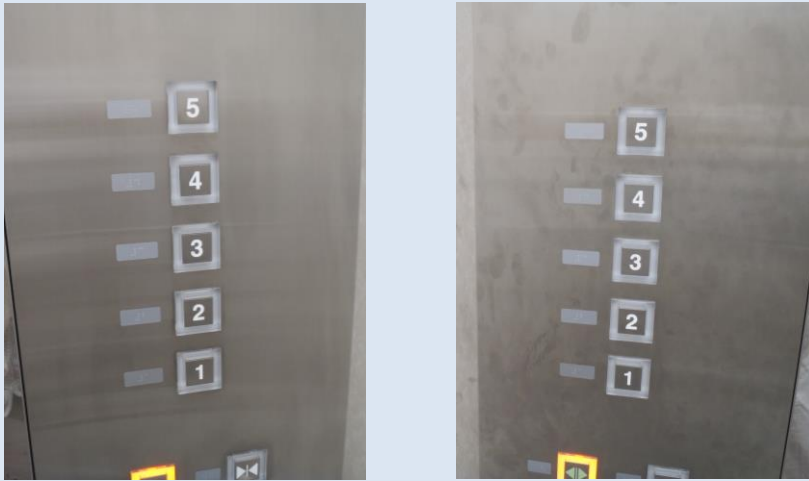
## ■ Otsu post office



# Stainless

■ Elevator

Operation panel anti-dirt



Elevator Frame & Door panel anti-dirt coating



Sink(Tone compare with Other maker)

Left side;Other maker, Right side;Our's



# Others

■ Post office

artificial leather chair



■ Post office

post



■ Mr. doughnut

washbowl(pottery made)



■ Kyocera head office wall paper (smokin room)

