

Water-borne pure Inorganic coating Agent

AD-Tech COAT

Instruction Manual



TRADE SERVICE CORPORATION

Guideline of AD Tech Coat

2022.Jan Revised

Waterborne Pure Inorganic Coating Agent (AD Tech Coat)

	Substrate	Correspondence Model	Specification	Usage(standard)	Way of Coating	Standard Package
Inorganic	Glass(Normal glass・Abrasion resistance)	K504UVC25	Abrasive・Hardener formulated	45m ² /500g	Polisher+Buff coating	500g Poly.container
	Glass(Solar panel・Under coat for Stainless steel, metals・Pottery etc)	K1006CP06(New Model)	Abrasive formulated・High concentration SiO ₂	45m ² /500g	Polisher+Buff coating	500g Poly.container
	Stainless(HL・Vib etc)High durability・Cure type		C-5406(＊1)	250℃x30min. Cure	30～40g/m ²	Degreasing by Alkali+Spray gun coat
	Stainless(HL・Vib・Mirror finish etc)	DC2202CPG1(＊2)	Abrasive formulated・High concentration SiO ₂	45m ² /500g	Polisher+Buff coating	500g Poly.container
	Room temp. dry・Simple curing type		DC2202G2(＊3)	200℃x20min. Cure・High concentration SiO ₂	45m ² /500g	Polisher+Buff coating
	Pottery(High durability type)	C-5406	250℃x30min. Cure	30～40g/m ²	Under treatment :K1006CP06 Coating; Spray gun coating	4Kg Poly.container
	Pottery(Room Temp.dry・Simple curing type)	DC2202CPG1	Abrasive formulated・High concentration SiO ₂	45m ² /500g	Polisher+Buff coating	500g Poly.container
		DC2202G2	200℃x20min. Cure・High concentration SiO ₂	45m ² /500g	Polisher+Buff coating	1kg Poly.container
	Organic	Paint(Soft surface)	K504PAK50	Gel. Type	70～80m ² /1kg	Micro fiber cloth or
Transparency resin plate(Soft surface)		Polisher+soft sponge buff coating				
Paint(Hard surface)・FRP・Hard paque film etc.		K504PKG2(＊4)	Gel. Type(Super high concentration SiO ₂)	50m ² /1kg	Polisher+Buff coating	1kg Poly.container
Car body coating agent (easy coat type)		CARPAL(＊5)	Gel・Hardener formulated	30～50g/Mid.size car	Micro fiber cloth or Polisher+soft sponge buff coating	100g Poly.container
Car body coating agent (For Pro. use)		CARPAL-L	Liquid type・Hardener formulated	30～50g/Mid.size car	Need surface treatment before coat. Micro fiber cloth or Polisher+soft sponge buff coating	100g Poly.container
Both	Special Spec. Products	CCA-Type(＊6)	Abrasive formulated・		Polisher+Buff coating	500g Poly.container

Remarks:

* 1) Usage of medicine is depend on thickness of membrane.

* 2) In cae of severe dirt and can not treated by DC2202CPG1, please consult with us. CCA-Type can be solve the problem.

* 3) Durability of simple curing type of DC2202G2 is in between room temperature dry and C5406 curing type.

* 4) of K504PKG2 is good for Car's Aluminium wheel antifouling.

* 5) In case of using simple car body coat(CARPAL), please wash a car and remove iron powder before coating.

* 6) CCA-Type to be used severe dirt and special usage such as high adhesion is requested, Airplane, High speed rail way etc. We provide depend on request.

* We are keeping to serve conventional Models as K1006v,D1308v2,K504PA,DC2202,DC1101 and DC2202UV73,K504UV73 .

and K1006KP35,K1006KP50 were discontinued and aggregated those K504PAK50 and K504PKG2. However we accept upon request of min.quantity of 10kgs.

* * Private Brand acceptable.

* * Above medicines has very high performance of antifouling due to antistatic function and even if get dirt it will be recovered by selfclean function by rain.

* * All Models are not contained any organicon pigment and solvent. Waterborne pure inorganic coating agent.

Tools I

Polisher



Photo is Model;PE-2010 by Ryobi made but other makers can be also applicable.

Orbital sander



Photo is Model;M931 by Makita made But other makers can be applicable.

Wool buff



Wool buff is recommendable short fiber. Effective bigger size diameter. Photo is dia18cm buff. (Applicable sponge buff also.)

Brush pad for Orbital sander



Above brush pad is special made. Please consult with us if any. (Applicable marketing buff also)

Shampooer



Squeeze wiper



Tools II

Hand pad



Above brush pad is special made.
Please consult with us if any.
(Applicable marketing pad also.)

Micro fiber cloth



Recommendable micro fiber cloth .
Do not use towel due to prevent from lint and
cotton oil.

Sponge



Nonwoven fabric pad



Brush



Roller



Application method <Window glass>

Substrate : Glass. Mirror(General)

Tools : ・ Polisher (Wool buff)

Products : K-504UVC25
(K-504UV73)

- ・ Shampooer
- ・ Squeeze wiper
- ・ Microfiber cloth

Work time : abt10min/㎡

1. Preparation

Shake K-504UVC25 well, and after confirm the abrasive can be dispersion. Then take agent optimum quantity to buff

2. K-504UVC25 Coating

Coating while polishing the glass surface. And polishing as to confirm the Agent of hydrophilic situation. Move the polisher slowly about 30cm per 10sec.



3. Remove abrasive & confirm hydrophilic

After coating, immediately remove abrasive by water and the same time to confirm the hydrophilic situation. If any place water repellent, repeat the above①~②.

4. Remove water

After confirmed all the area be hydrophilic situation, then remove the water using shampooer and squeeze wiper.



5. Wiping by dry cloth

In case of glass surface can be seen white after dry up This is remained abrasive After remove water. Then wipe out with dry micro fiber cloth to those abrasive.

※If There is no abrasive remained, it is not necessary to do so.

Finish work

Applying Over coat

Products : K-504UV73
To make more durability, apply the over coat if necessary.



1. Mixing the agent

K-504UV73 has composite from main agent and hardener.

Prepare mixed agent with main agent and hardener 8:4 by weight ratio.

2. Coating(more than 2times coat at least)

Take the K-504UV73 optimum quantity to squeezed wet microfiber cloth and coat to glass and do repeat at least 2times.If coating area is wide enough, divided coat area about 50sqcm and coating coat area by area.

3. Aging

To make aging about 10min.

4. Wiping by dry cloth

Wiping by dry micro cloth to wipe up While checking the unevenness part.



If solid matters adhesion on surface of glass, it is cause to scratched. Please wash those solid matters before coating.



It will be hard to be hydrophilic situation near the window flame area by silicone oil membrane due to putty. Please explain it to the customer before work.

Application method <Solar panel>

Substrate : Glass

Products : K-1006CP06

Work time : abt10min / sheet
(1.6㎡)

Tools : • Polisher (Wool buff)

- Shampooer
- Squeeze wiper
- Microfiber cloth

1. Preparation

Shake K-1006CP06 well, and after confirm the abrasive can be dispersion. Then take agent optimum quantity to buff

2. K-1006CP06 Coating

Coating while polishing the glass surface. And polishing as to confirm the Agent of hydrophilic situation. Move the polisher slowly about 30cm per 10sec.



3. Remove abrasive & confirm hydrophilic

After coating, immediately remove abrasive by water and the same time to confirm the hydrophilic situation. If any place water repellent, repeat the above ①~②.

4. Remove water

After confirmed all the area be hydrophilic situation, then remove the water using shampooer and squeeze wiper.



5. Wiping by dry cloth

In case of glass surface can be seen white after dry up This is remained abrasive After remove water. Then wipe out with dry micro fiber cloth to those abrasive.

※If There is no abrasive remained, it is not necessary to do so.

Finish work

About scaffolding



Scaffolding plate 2m length which is selling in the market such as Home center(aluminum made is better)
Cut the 5cm thickness wood block to the size of scaffolding plate wide and install to the plate by screw. Install the iron sheet to the one side of scaffolding plate by bolt and nut which can be catch the PV panel frame like above photo. Use 2sheets as a one set
With safety and effectively work



If solid matters adhesion on surface of glass, it is cause to scratched.
Please wash those solid matters before coating.



Depend on the working site, it necessary to prepare the water and electricity. Need to confirm before work.

Application method <Stainless >

Substrate : Stainless

Tools :

- Orbital sander (If work are is wide)
- Orbital sander brush pad
- Nonwoven fabric pad
- Microfiber cloth

Products : K-1006CP06 or DC2202CPG1

Over coat;DC-2202G2 orDC2202UV73)

Work time : abt15min/㎡

1. Preparation (※In case by Hand)

Shake K-1006CP05 well, and after confirm the abrasive can be dispersion. Then take agent optimum quantity to nonwoven fabric pad.

2. K-1006CP0 Coating

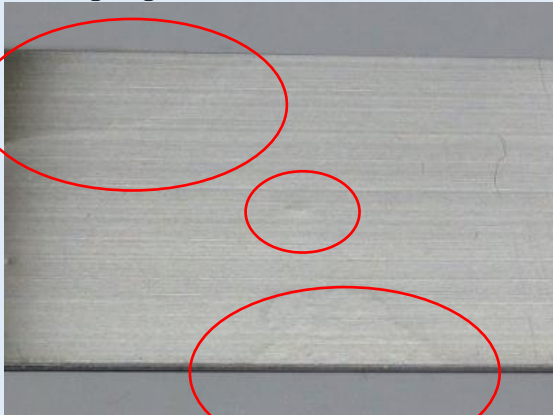
Coating while polishing the stainless surface. And polishing as to confirm the Agent of hydrophilic situation.

(to polish along line if hair line finish SUS)



3. Remove abrasive & confirm hydrophilic

Remove abrasive by water and the same time to confirm the hydrophilic situation. If any place water repellent, repeat the above①~②.



Coat again due to repellent area

4. Wiping by dry cloth

Removing the water together with abrasive by dry microfiber cloth.

Finish work

Applying Over coat

Products : DC-202G2 or DC-2202UV73

To make more durability, apply the over or coat if necessary.

1. Mixing the agent

DC-2202G2 is high concentration SiO₂. DC-2202UV73 has composite from main agent and hardener.

Prepare mixed agent with main agent and hardener 8:4 by weight ratio.

2. Coating(more than 2times coat at least)

Take the DC-2202G2 orDC-2202UV73 optimum quantity to squeezed wet microfiber cloth and coat to glass and do repeat at least 2times.If coating area is wide enough, divided coat area about 50sqcm and coating coat area by area.

3. Aging

To make aging abut 10min.

4. Wiping by dry cloth

Wiping by dry micro cloth to wipe up While checking the unevenness part.



In case of Simple coat use only DC2202CPG1

In case of Mirror finish stainless recommend to use K-504PAK50 To prevent from scratched.



Hand polish is not enough coating, We recommend to use machine such as orbital sander etc.

Application method <Stainless sink>

Substrate : Stainless

Products : K-1006CP06 or DC-2202CPG1

Over Coat;DC-2202G2 or DC2202UV73

Work time : abt20min/m²

Tools :

- Orbital sander (If work are is wide)
- Orbital sander brush pad
- Nonwoven fabric pad
- Microfiber cloth

1. Preparation (※In case by Hand)

Shake K-1006CP06 well, and after confirm the abrasive can be dispersion. Then take agent optimum quantity to nonwoven fabric pad.

2. K-1006CP06 or DC2202CPG1 Coating

Coating while polishing the stainless surface Until stainless surface up to hydrophilic situation.



3. Remove abrasive & confirm hydrophilic

Remove abrasive by water and the same time to confirm the hydrophilic situation. If any place water repellent, repeat the above①~②.



4. Wiping by dry cloth

Removing the water together with abrasive by dry microfiber cloth.

Finish work

Applying Over coat

Products : DC-2202G2 or DC-2202UV73

To make more durability, apply the over coat if necessary.

1. Mixing the agent

DC-2202G2 is high concentration SiO₂. DC-2202UV73 has composite from main agent and hardener.

Prepare mixed agent with main agent and hardener 8:4 by weight ratio.

2. Coating(more than 2times coat at least)

Take the DC-2202G2 orDC-2202UV73 optimum quantity to squeezed wet microfiber cloth and coat to glass and do repeat at least 2times.If coating area is wide enough, divided coat area about 50sqcm and coating coat area by area.

3. Aging

To make aging about 10min.

4. Wiping by dry cloth

Wiping by dry micro cloth to wipe up While checking the unevenness part.



In case of Simple coat use only DC2202CPG1
In case of Mirror finish stainless recommend to use K-504PAK50
To prevent from scratched.



It is difficult to make totally hydrophilic to the long time used sink due to oil penetration to the scratch of stainless sink surface.

Application method <Toilet>

Substrate : Pottery

Tools : • Nonwoven fabric pad

Products : Products : K-1006CP06 or DC2202CPG1 • Microfiber cloth

Over Coat;DC-2202G2 or DC2202UV73

Work time : abt15min/㎡

1. Preparation

Shake K-1006CP05 well, and after confirm the abrasive can be dispersion. Then take agent optimum quantity to nonwoven fabric pad.

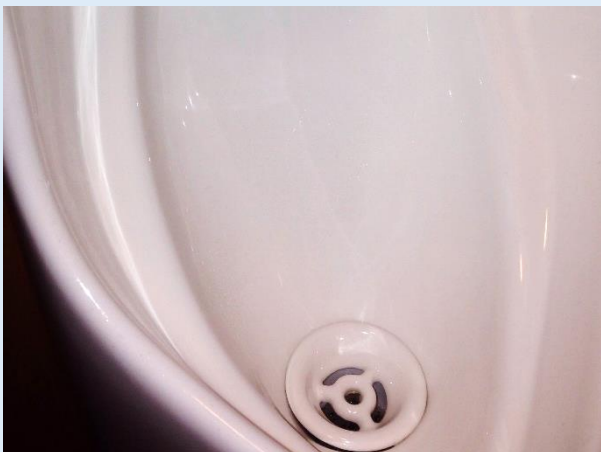
2. K-1006CP06 or DC2202CPG1 Coating

Coating while polishing the toilet surface
Until toilet surface up to hydrophilic situation.



3. Remove abrasive & confirm hydrophilic

Remove abrasive by water and the same time to confirm the hydrophilic situation. If any place water repellent , repeat the above①~②.



4. Wiping by dry cloth

Removing the water together with abrasive by dry microfiber cloth.

※If There is no abrasive remained, it is not necessary to do so.

Finish work

Applying Over coat

Products : DC-2202G2 or
DC-2202UV73

To make more durability,
apply the over coat if necessary.

1. Mixing the agent

DC-2202G2 is high concentration SiO₂.
DC-2202UV73 has composite from
main agent and hardener.

Prepare mixed agent with main agent
and hardener 8:4 by weight ratio.

2. Coating(more than 2times coat at least)

Take the DC-2202G2 orDC-2202UV73
optimum quantity to squeezed wet
microfiber cloth and coat to glass and
do repeat at least 2times.If coating
area is wide enough, divided coat area
about 50sqcm and coating coat area by
area.

3. Aging

To make aging abut 10min.

4. Wiping by dry cloth

Wiping by dry micro cloth to wipe up
While checking the unevenness part.



Some of new toilet products has
already coated by original coating,
In this case, Sometimes,
effectiveness can not be enough
as expected.



When coating work to installed
toilet ,better to reduce the water
volume in the toilet bowl.

Application method <Wash bowl>

Substrate : Pottery

Tools : • Nonwoven fabric pad

Products : Products : K-1006CP06 or DC2202CPG1• Micro fiber cloth

Over Coat;DC-2202G2 or DC2202UV73

Work time : abt15min/㎡

1. Preparation

Shake K-1006CP06 or DC2202CPG1 well, and after confirm the abrasive can be dispersion. Then take agent optimum quantity to nonwoven fabric pad.

2. K-1006CP06 orDC2202CPG1 Coating

Coating while polishing the wash bowl surface Until wash bowl surface up to hydrophilic situation.



3. Remove abrasive & confirm hydrophilic

Remove abrasive by water and the same time to confirm the hydrophilic situation. If any place water repellent , repeat the above①~②.



Coat again due to repellent area

4. Wiping by dry cloth

Removing the water together with abrasive by dry microfiber cloth.

※If There is no abrasive remained, it is not necessary to do so.

Finish work

Applying Over coat

Products : DC-2202G2 or DC-2202UV73

To make more durability, apply the over coat if necessary.



1. Mixing the agent

DC-2202G2 is high concentration SiO₂. DC-2202UV73 has composite from main agent and hardener.

Prepare mixed agent with main agent and hardener 8:4 by weight ratio.

2. Coating(more than 2times coat at least)

Take the DC-2202G2 orDC-2202UV73 optimum quantity to squeezed wet microfiber cloth and coat to glass and do repeat at least 2times.If coating area is wide enough, divided coat area about 50sqcm and coating coat area by area.

3. Aging

To make aging about 10min.

4. Wiping by dry cloth

Wiping by dry micro cloth to wipe up While checking the unevenness part.



Please refer next page FRP bath tub in case of wash bowl is made from FRP .



There are many curve part, better to work by hand used Nonwoven fabric pad. Takes little more time than machine.

Application method <Bathtub>

Substrate : FRP
Products : K-1006CP06
K-504PKG2
Work time : abt30min.

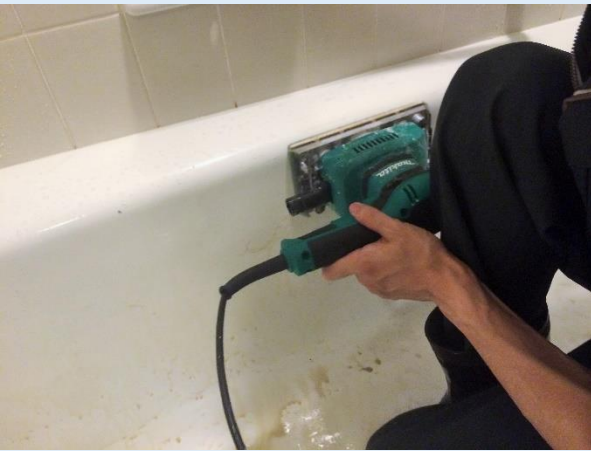
- Tools :
- Orbital sander
 - Brush pad for orbital sander
 - Nonwoven fabric pad
 - Micro fiber cloth

1. Preparation

Shake K-1006CP06 well, and after confirm the abrasive can be dispersion. Then take agent optimum quantity to orbital sander brush pad.

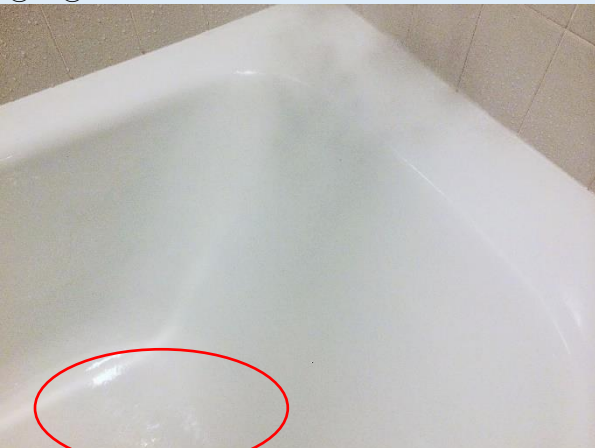
2.K-1006CP06 Coating

Coating while polishing the bath tub surface
Until bath tub surface up to hydrophilic situation.



3. Remove abrasive & confirm hydrophilic

Remove abrasive by water and the same time to confirm the hydrophilic situation. If any place water repellent, repeat the above ①~②.



Coat again due to repellent area

4. Wiping by dry cloth

Removing the water together with abrasive by dry micro fiber cloth.

5. Coating K-504PKG2

Take optimum quantity of K-504PKG2 to squeezed wet microfiber cloth and spread coat to bath tub surface.



6. Wiping by dry cloth

If you mind the grain of K-1006KP50's gel, wipe it by microfiber cloth.

Finish work



Need to use machine to polish work due to the remained obstinate dirt even look like clean.



If sever dirt is remained on bathtub, recommend to use CCA-type as under treatment. It may be dropped the luster (Haze) due to strong polishing power. We arrange particle size and volume of abrasive of CCA-type accordingly.

Application method <Glazed Tile >

Substrate : Tile (with glazed)

Tools : • Polisher (wool buff, sponge buff)

Products : K-1006CP06 or DC-2202CPG1

• Nonwoven fabric pad

Over coat; DC-2202G2 or DC-2202UV73 • Micro fiber cloth

Work time : abt10min./m²

1. Preparation (※In case of hand)

Shake K-1006CP06 or DC2202CPG1 well, and after confirm the abrasive can be dispersion. Then take agent optimum quantity to nonwoven fabric pad.

2. K-1006CP06 orDC2202CPG1 Coating

Coating while polishing the tile surface
Until tile surface up to hydrophilic situation.



3. Remove abrasive & confirm hydrophilic

Remove abrasive by water and the same time to confirm the hydrophilic situation. If any place water repellent, repeat the above①~②.



4. Wiping by dry cloth

Removing the water together with abrasive by dry micro fiber cloth.

Finish work

Applying Over coat

Products : DC-2202G2 or DC-2202UV73



To make more durability, apply the over coat if necessary.

1. Mixing the agent

DC-2202G2 is high concentration SiO₂. DC-2202UV73 has composite from main agent and hardener.

Prepare mixed agent with main agent and hardener 8:4 by weight ratio.

2. Coating(more than 2times coat at least)

Take the DC-2202G2 orDC-2202UV73 optimum quantity to squeezed wet microfiber cloth and coat to glass and do repeat at least 2times.If coating area is wide enough, divided coat area about 50sqcm and coating coat area by area.

3. Aging

To make aging about 10min.

4. Wiping by dry cloth

Wiping by dry micro cloth to wipe up While checking the unevenness part.



Substrate :Necessary to choose the tile with glazed
It is different applications in case of non glazed tile. Please consult with us.



Recommendable polisher machine if work area is wide.



Please refer next page joint filler of tile.

Application method <Non-glazed Tile >

Substrate : Tile(Non-glazed)

- Tools :
- Nonwoven fabric pad
 - Roller
 - Micro fiber cloth

Products : K-50PKG2

or K-504PAK50

Work time : abt10min./m²

1. Wash wall

Wash by high pressure water to make clean the wall. It is possible to wipe the dirt by water if it is not applicable the area for high pressure water

2.K-504PKG2 or K-504PAK50 Coating

To take a K-504PKG2 or K-504PAK50 to roller and spraying little water to wall and roller coating to the wall that may more smooth coating and economical.



3. Wiping by dry cloth

If you mind the grain of K-1006KP50 or K-504PAK50's gel, wipe it by microfiber cloth. If not minded, no need to do so.



Finish work

About Joint filler of tile

Products : C-5406UV73

For both outer and inner, use C-5406UV73 to the mortar tile joint filler for prevent from mold.

1. Mixing the agent

C-5406UV73 has composite from main agent and hardener.

Prepare mixed agent with main agent and hardener 8:4 by weight ratio.

2. Coating(more than 3times coat at least)

Use brush to paint C-5406UV73 to joint filler part at least 3times or more.



Only applicable to mortar joint filler but no effected to the silicone caulking



Please be mind that it is easy to hardened C-5406UV73, so if it stick to other than substrate , please remove immediately .



Applicable gel type products both glazed, non-glazed tile. On case of glazed tile, recommendable to use sponge or microfiber cloth to coat like wiping.



Not necessary to wipe out of gel's grain. Coated such as tunnel wall where dose not minded seriously.

Application method <Outer wall>

Substrate : Painted concrete wall

Products : K-504PKG2

or K-504PAK50

Work time : abt10min./m²

Tools : • Roller

• Nonwoven fabric pad

• Microfiber cloth

1. Wash wall

Wash by high pressure water to make clean the wall.

2.K-504PKG2 or K-504PAK50 Coating

To take a K-504PKG2 or K-504PAK50 to roller and spraying little water to wall and roller coating to the wall that may more smooth coating and economical.



3. Wiping by dry cloth

If you mind the grain of K-504PKG2 or K-504PAK50's gel, wipe it by microfiber cloth. If not minded, no need to do so.



Finish work

About mortar joint filer

Products : C-5406UV73

For outer wall mortar joint filer, use C-5406UV73 to prevent from mold.

1. Mixing the agent

C-5406UV73 has composite from main agent and hardener.

Prepare mixed agent with main agent and hardener 8:4 by weight ratio.

2. Coating(more than 3times coat at least)

Use brush to paint C-5406UV73 to joint filer part at least 3times or more.



Only applicable to mortar joint filer but no effected to the silicone caulking



to hardened C-5406UV73, so if it stick to other than substrate , please remove immediately .



Not applicable for spray coating but only brush coating .
We strongly recommend to coat by polisher and buff. For hard adhesion.



Not necessary to wipe out of gel's grain. Coated such as tunnel wall where dose not minded seriously.

Application method <Paper wall>

Substrate : Plastic (resin)products

Tools : • Microfiber cloth

Products : K-504PAK50

Work time : abt5min./m²

1. Wash wall

To make clean the wall before coating by water or detergent to remove dirt.



3. K-504PAK50 coating

Coat like wiping slowly to attention for damage to the wall. Minded can be coated to the crater part of convexo-concave area too.



2. Preparation

Take optimum quantity of K-504PAK50 to squeezed wet microfiber cloth.



4.Wiping by dry cloth

If you mind the grain of K-504PAK50's gel, wipe it by micro fiber cloth. If not minded, no need to do so.

Finish work



Please check whether is it possible to coat or not before coating, because there are some paper wall has severe 凹凸 shape.



Efficient work; Firstly take gel products to squeezed wet micro fiber cloth and put gel products to several point ,then spread to coat all over the wall.

Application method <Sign board>

Substrate : Plastic (resin)products

Tools : • Microfiber cloth

Products : K-504PKG2

• Shampooer

Work time : abt10min./m²

1. Wash substrate

To make clean the sign board before coating by water or detergent to remove dirt.



3. K-504PAK50 coating

Coat like wiping with squeezed wet micro fiber cloth.



2. Preparation

Take optimum quantity of K-504PAK50 that squeezed wet microfiber cloth.



4. Wiping by dry cloth

If you mind the grain of K-504PAK50's gel, wipe it by microfiber cloth. If not minded, no need to do so.

Finish work

There are many kinds of sign board materials such as acrylic, film, FF sheet etc. and it is easy scratched for the film type, so please minded to coat with gently.

- Also possible to apply to artificial leather for anti-dirt too.
- We strongly recommend to coat by polisher and buff. For hard adhesion.



Efficient work; Firstly take gel products to squeezed wet micro fiber cloth and put gel products to several point ,then spread to coat all over the wall.

Application method <Car>

Substrate : Body(painted area)

Tools : • Polisher (wool or sponge buff)

Products : CARPAL, CARPAL-L

• microfiber cloth

Work time : abt2Hrs./unit (Coating is only 30min)

1. Preparation

① Wash car

Wash the sand · dirt by water. Then remove remained water by microfiber cloth.(if water remain a bit is no problem)

②Removed Iron powder

Remove iron powder which is stacked on the car body by iron remover or special clay for iron removable.

③Polishing(for Pro.works)

Use exclusive non oil car abrasive(fine particle) and polisher to polish body for coating.(This polishing is very important)

④Degreasing

Use degreasing agent to wash out of remained oil of abrasive.



2. CARPAL,CARPAL-L coating

Take optimum quantity of CARPAL.CARPAL-L to squeezed wet microfiber cloth.

Advisable to coat separately about 50cm sq. and dry wiping to finish block by block to



3. CARPAL,CARPAL-L coating

1. Choice of Medicine work

In case of simple coat ;After ①~② use CARPAL to take squeezed wet microfiber cloth and knead to dispersion

For Pro use CARPAL-L need to take process of ①~④ works.

2. Coating(more than 2times coat at least)

Take the medicine optimum quantity to squeezed wet microfiber cloth and coat on Car body and do repeat at least 2times.If coating area is wide enough, divided coat area about 50sqcm and coating coat area by area.

3. Aging

To make aging abut 10min.

4. Wiping by dry cloth

Wiping by dry micro cloth to wipe up While checking the unevenness part.

It is better to use finishing polisher (double action type) with finishing use sponge buff (put one push or two push to water by spray to finishing buff··important) to Polish



Finish work

This is normal car body coating method. In case of special shape or substrate (FF sheet, Stainless etc) and Special painting(like self-recovering paint etc) asking you to confirm separately.



reference; Please see HP movie.

Introduction of Container

(Container Changeable without notice)

Products appearance



Liquid Type



Abrasive combined Type



Gel Type

1kg Liquid Type container



Objected Model:
K-1006v,D-1308v2,DC2202G2,K-504PA etc

500g Abrasive combined liquid Type container



Objected Model;
K-1006CP06,K-504UVC25,DC-2202CPG1 etc

1kg Gel Type container



Objected Model;
K-504PKG2 ,K-504PAK50 etc

800g+200g 2liquid type container (main agent + hardener)



Objected Model;
DC-2202UV73 / K-504UV73 / C-5406UV73

20kg Bulk container



Depend on request

About maintenance;

AD-Tech COAT has very good performance of reducing adhesion organic dirt which is made from **waterborne pure inorganic** , beside showing excellent anti-dirt by self-cleaning effect and anti-electrostatic effect .

And to make proper maintenance , exercise anti-dirt effect utmost. And keep clean state maintain long time.

We hope you to refer this manual therefore.



Notice for care

If rub by hard things, substrate get damaged. AD-Tech COAT on the substrate also come off. please be minded when wash do not use hard things which is more harder than substrate such as metal brush but soft sponge ,brush etc.

Also do not use strong acid, strong alkali chemicals, there are possibility to peel AD Tech Coat membrane and damage to substrate.

Working with attention by fall from stepladder and be care the detergent and products get eyes

Maintenance for out doors

Wash by water where has no self-cleaning effect by rain. If dirt can not be clean only by water, Use neutral detergent and use rinse detergent by water.

Not recommendable for windy day due to sandy dirt stick on the substrate before water dry up.

Maintenance for indoor

Dirt where usually no self-cleaning part, wiping by wet microfiber cloth.

If dirt can not be clean only by water, Use neutral detergent but wipe out detergent by water Firmly (do not remain detergent)

Maintenance for Glass ,Mirror

Kind of cause for Glass and mirror's fur are minerals ingredient which is contain in tap water. Those minerals are easy to bond and become flaky crystal with substrate because there are same family . Advisable to drain water by squeeze wiper either wipe out by microfiber cloth to prevent from flaky crystal when you wash them by water.

About mold, algae

Mold and algae are easy glow where close ventilation and wet place and anywhere.

Please remove them when you find immediately otherwise enlarge gradually.

Washing as pouring water and rubbing by sponge when you find beginning . If can not removal, Use special remover of mold and algae but to follow the manual of those.

Caution when in use

Important items of explanation

AD-Tech COAT does not stick dirt totally. Please see and confirm the expected efficiency by Substrate before purchase.

Please refer showing below. It is not expected efficiency substrate to attention when in use

Not expected efficiency

Substrate surface with special processing (examples: anti-fog, anti-glare) are some times not applicable. Please confirm before work.

Advisable not to use possibly wet floor from prevent fall by slipping due to hydrophilic Membrane .

Not to use for tableware or those food linkage group.

Not expectable anti-fouling effect using the high temperature place like direct fire (example : gas oven, grill etc)and also oven toaster even coating membrane stay.

There are possibility of non expectable efficiency and inapplicable substrate other than above substrate depend on kind of materials, shape, environment .Please refer explanation tiems and caution points and consult with those substrate suppliers to confirm.

About storage

Please keep cool and dark space and keep away from direct sunshine with closed lid firmly.

Some of products has milky color, suspended and sedimentations but disperse them by shaking also no effected about quality.

About guarantee

This manual contents are based in our testing · cases but no guaranteed for the effect.

In case of claims caused by AD-Tech COAT, correspond by under products liability law. (Necessary to showing the proof of claim of AD Tech COAT defective.)

We are not guaranteed for trouble and claim about working result.

Q 1	Is it possible to corresponded every dirt ?	
A	It is not expected enough effect for the efflorescence from concrete, iron rust and heavy oil stain. But against dirt caused by exhaust gas, speck,dust exercise strong effect.	
Q 2	Is it possible to coat anything ?	
A	Not coatable to paper, cloth and green wood such as water penetrated substrate.	
Q 3	Is it effective any place ?	
A	It is effected the place humidity more than 40percent, but only functionable self-cleanig effect the place where get rain.	
Q 4	Is it effective without rain?	
A	It has capability of anti-static electricity then difficult to get dirty from dust and exhaust gas. What is more to easy cleaning by just wiping by wet cloth.	
How long dose stand AD Tech Coat membrane?		
Q 5	A	We verify the life of membrane showing as below and result is depend on object substrate and field environment. [SUV test 1000Hrs no deterioration (20years under natural circumstance no deterioration)] Please refer [schema of products] table
Q 6	Is there any guarantee system for products?	
A	We guaranree by products liability insurance any claim occurred caused by AD-Tech COAT and or replace the products if defective.	
Q 7	How to maintan after coated?	
A	Use only water to wash or neutral detergent. Details refer to maintenance separate sheet.	
What is th difference between AD Tech COAT and photocatalyst ?		
Q 8	A	Photocatalyst is composited titaniumu oxide and organic compound solvent and has a function of hydrophilic, anti static electricity also breakdown of organic things by ultra violet but need ultra violet. AD–Tech COAT is comsited silicon dioxide and has a function of hydrophjilic ,anti static electricity. it is very easy handling with safety due to no solvent used but water without any organic matter contents then no change color, no degradation and no ultra violt required
What is different between AD Tech COAT and conventional glass coating ?		
Q 9	A	There si nothing contained any organic matter in AD–Tech COAT,so never change color and degeration of membrane also has a flexibility to follow to substrate expansion coefficient .AD Tech membrane has high transparency with low reflection of light, therefore no gloss but enjoy the depth of color and no change of felling of original substrate.
What is a merit of water-borne pure inorganic ?		
Q 10	A	It 's very gentle to environment firstly and human too, also no color change,no degradation of menmbrane but high performance of anti-dirt especially organic dirt with easy handling without fail.

Q&A 防汚以外の効果に関する質問

Q 11	Any antibacterial function?	
A	No it has no function.	
Q 12	Any anti-odor function ?	
A	It has a indirectly effected because of less dirt sticks which has a cause of odor. But can not control of occuring odor completely.	
Q 13	Any anti-mold function?	
A	It has a indirectly effected because of less stick food of mold,but can not control of mold growth completely.	
Q 14	Any anti-mist function for glass and mirror ?	
A	It has a function of anti-mist to put water on the glass to make water mambrane but conditionaly no dirt on the surface of glass. If no effect or less effect, wash by water to remove dirt formaintenance timely.	
Q 15	Any anti-scratch function?	
A	It has no such a function, membrane it'self very thin and no effect of harden the substrare.	
Q 16	Is it removable of flaky crystal on the glass or mirror ?	
A	Our abrasive of AD– Tech COAT is desinged to remove organic dirt but not consider to remove flaky crystal. Hard abrasive can remove flaky crystal but the same time to make scratch of glass surface too.if need to remove flaky crystal use special abrasive pad. After coated by AD-TechCOAT ,it is no easy tostick flaky crystal.	

Q&A 施工・保管に関する質問

Q 17	How long dose it take to dry up after coating ?	
A	No waiting time to dry, immediately wash out abrasive by water afetr coating, standing after coating, abrasive stick on the glass surface. Only need about 10min.time to harden when you do over coat products.	
Q 18	Dose anyone can handle?	
A	Yes , no requirement of license etc.	
Q 19	dose any special tools and skill are required ?	
A	We recommend you to use polisher and or orbital sander as cleaning tools although possible to coat by hand to use Nonwoven fabric pad, since proper work of degrease, taking time by hand.Not required special skill but coating properly.	
Q 20	Is there any possiblity of uneven ?	
A	No uneven is occurred due to very thin membrane like 50nm thikiness. But if to use over coat which is rather thicker membrane then uneven once in a while.	
Q 21	Dose any changing color and or degradation of membrane ?	
A	No it is not because nothing organic matter contents.	
Q 22	Dose any influence by weather ?	
A	It is not possible to work sub-Zero weather. In case of under the flaming sun, please work in shade but not under the sun due to very fast dry and becoming uneven coat.Fine day and also rainy day workable.	
Q 23	Dose closed area can work ?	
A	No problem to do so, because no volatile matter included and no requiered even mask and ventilation.	
Q 24	Is it possible to paint on the coating ?	
A	Yes, basically possible but to consult with paint manufacture.	
Q 25	Is it possible to AD Tech COAT together with other coating agent ?	
A	No,Do not use other coating agent together with AD Tech Coat.It will be spoil effectiveness of AD Tech Coat. In any way other coating agent should be needed to use.please consult with us before use.	
Q 26	How much money to be charged for coating ?	
A	It is depend on total volume, necessity of scaffold and or other conditioned concern.please consult with us for estimation.	
Q 27	How to keep AD Tech COAT agnet ?	
A	Keep away from direct sun shine and keep cool and dark place with closed lid firmly.	
Q 28	Is there any consumption time limit for AD Tech Coat agent ?	
A	We guarantee for 1year on condition of without unseal. Recommend to use as soon as you can after unseal.	

Q&A その他の質問

Q 29	What is hydrophiklic ?	
A	(Water hydrophilic) ;Water contact angle between substrate and water below 50degree , (Water reoellent);Water contact angle between substrate and water over 90degree.Super hydrophilic : water contact angle between substrate nad water below 10degree. Then hydrophlic has more effect of anti-dirt by self-cleaning by rain.	
Q 30	What is the particle size of abrasive ?	
A	We are using about 2μm abrasive size with composited of silicon dioxide and alumina with no harm. Also not scratchable to substrate.	
Q 31	Is it strong against heat ?	
A	Membrane it'self can stand more than 1300c.degree against heat, however hydrophilic effect will be lose after heat due to evaporate the water in membrane.	
Q 32	Is it possible to stand against friction ?	
A	We confirmed that membrane is stornq enough as to testing by friction testing machine.	
Q 33	It that Japan made ?	
A	Yes.	
Q 34	What is silicon dioxide ?	
A	It is SiO2. it is a main ingradient of earth and 2nd material of exisiting in the earth , like glass, sand,rock and soil also composited from SiO2 mainly. It is gentle to the human and environment too.	
Q 35	Why so many Models of products about AD Tech COAT ?	
A	We are considering for more effective to the usage to our customers but basic ingredient only silicon deoxide and water. Please consult with us if you do not find suitable models you need for.	

R&D • Manufacture • sales

Trade Service Corporation

Zip code :532-0002
6-Chome,10-
5,Higashimikuni,yodogawa-ku
Osaka. Japan

TEL : 06-6392-1313
FAX : 06-6392-1403
mail : info@ts-corp.biz

<http://ts-corp.biz>

Agent • sales rep.

